

Alaska Department of Fish and Game

Habitat Section
Southeast Region



191-20-13800 Tributary 1

ADDITION

Water body name:

Survey date: 8/23/2024

Quad: Icy Bay D2, D3

Species & Lifestage:

Upper Reach Latitude: 59.986568 **Longitude:** -141.630854

Survey crew: NJ, CD, FC

Lower Reach Latitude: 59.983452 **Longitude:** -141.630087

Findings: We surveyed this uncataloged stream up to the upper extent using a backpack electrofisher and GPS and captured juvenile coho salmon. This stream resides in a forest buffer and appears to seep out of the ground at waypoint 1149 near a ponded water complex (Table 1; Figures 1–3).

Recommendations: Add this uncataloged stream to the anadromous waters catalog for rearing coho salmon (Figure 4).

Nomination: Pending

Table 1.–191-20-13800 tributary 1 survey data.

Waypoint	Latitude	Longitude	Notes	Stream Width ft	Stream Substrate	Habitat Features	Gradient %	Sample Effort	Sample Results
1146	59.984304	-141.630887	Young-of-year CO capture about 50 ft upstream of old road crossing with removed crossing structure. Advancing upstream.	4-6	Small gravel Large gravel	Cut banks	2-4	EF	2 CO
1147	59.985000	-141.630806				Cut banks	2-4	EF	2 CO
1148	59.985457	-141.631385				Cut banks		EF	2 CO
1149	59.986367	-141.631143	Continued CO capture. Fish habitat continues upstream. Cutting across east to nearby stream due to time.			Cut banks		EF	2 CO



Figure 1.–Juvenile coho salmon caught at waypoint 1146.



Figure 2.–Looking upstream at waypoint 1146.



Figure 3.–Looking downstream at waypoint 1149.

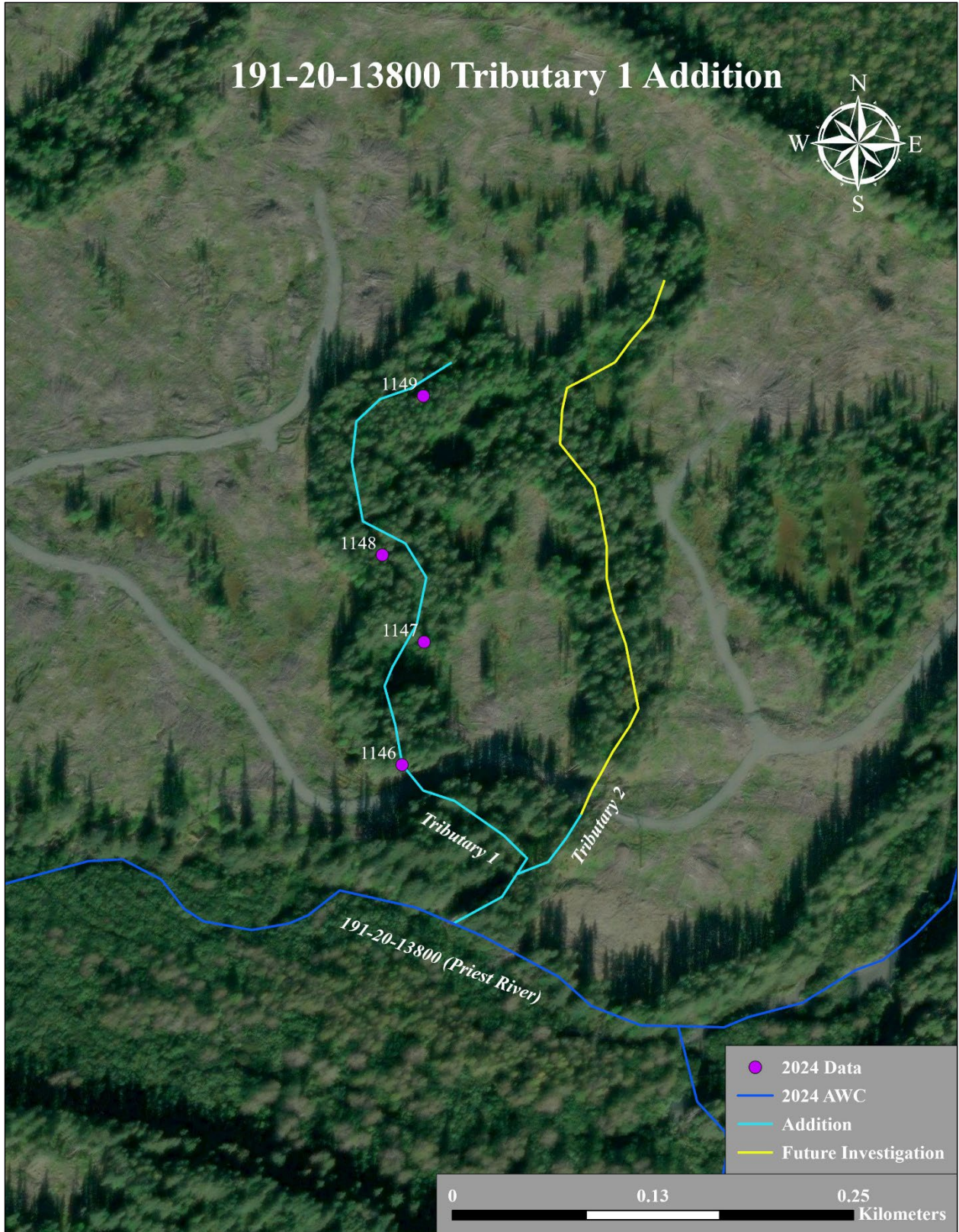


Figure 4.–191-20-13800 tributary 1 addition map.